

RYAN WHITE HIV/AIDS PROGRAM (RWHAP)

Regional AETCs Evaluation Report Highlights, 2016-2019

Data provided by JSI, Inc., RWHAP Regional AETCs
National Evaluation Summary Report, 2016-2019

29,656 TOTAL TRAINING PROGRAMS CONDUCTED

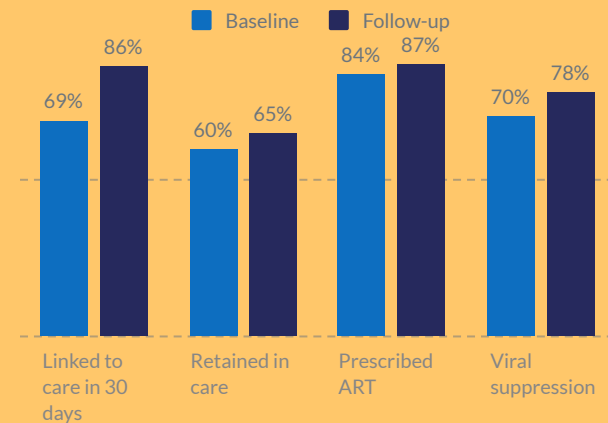
(2016-2019)



PRACTICE TRANSFORMATION PROJECT (PTP) (2016-2019)



Significant increases in the capacity to provide HIV services over the PTP period include improvements to linkage in care within 30 days of diagnosis



More than **50%**
increase in training
(2016-2019)

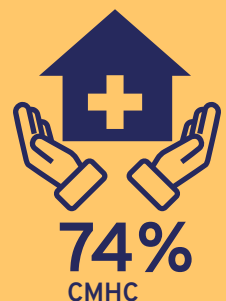
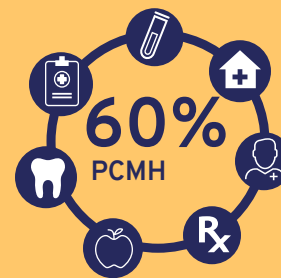


109,285
Participants trained
(2017-2019)

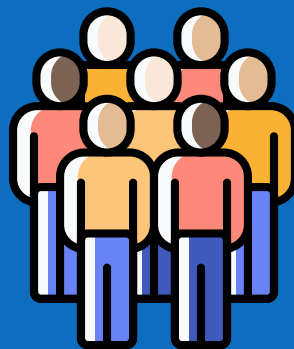


*We opened an HIV medical clinic whereas previously we referred out, going from 0 patients to 124 patients with HIV and HCV...
PTP clinic team member*

A majority of the PTP clinics were Patient Centered Medical Homes (PCMH) and/or Community & Migrant Health Centers (CMHC)



More than **64%**
of trainees provided
services in settings
where the majority of
people served are
people of color with HIV
(2017-2019)



Approximately
700,000 patients cared for
78,248 were tested for HIV



**INTER-
PROFESSIONAL
EDUCATION
(IPE) PROJECT**
(2018-2019)

62

Health profession programs (HPPs) participated in the IPE project



50%
HPPs were medical or pharmacy schools

"...prior to starting IPE, I didn't have plans to work [with people with HIV]. IPE opened my eyes to the opportunities available." - IPE nursing student